

# swift

social work information, facts and topics

THE NEWSLETTER OF THE NSW BRANCH OF AASW

Spring 2009



## Congratulations!!



Elspeth Browne and Jill Davidson  
on receiving life membership of the AASW

**COME ALONG TO OUR AGM &  
CELEBRATE WITH ELSPETH AND JILL**

Thursday 22 October, 2009 at the AASW NSW Branch from 4.30pm  
Light refreshments will be provided. RSVP by Friday 9 October for catering!

**ALL WELCOME!**



# Editorial

## Spring is finally here!

*The jasmines are in full bloom and so are the contents of this Spring edition of SWIFT... and it's a boomer! This 'mixed bag' edition is full of colorful surprises.*

*There's an article on Workcover, which outlines the latest developments on social workers in private practice and there are some real opportunities for being involved with clients with work related injuries. You might also find interesting, the article on the mental health professionals network (MHPN) and the involvement of social workers with this group.*

*With the tenth anniversary of East Timorese independence, it is timely that we have an update for you from the Juvenile Justice program (Pradet) which gives an insight into the range of their involvement with youth...an article which I'm sure you'll enjoy!*

*The AASW NSW Branch Industry Nights are proving to be a great success and in this issue we have a photo shoot from July and September. These nights are great fun and I do encourage you to get along to one soon.*

*And finally, this year's AGM will be a gala event as we celebrate the addition of two of our NSW members into the lifetime social work hall of fame. By the way, one of our new life members, Jill, was a founder of Pradet in 1999!*

*So come along and catch up on all the latest branch news and gossip.*

*See you there!*

*Nives Crvenkovic, Sub-editor*

# Swift

## COPY DEADLINES 2009

### 13 NOVEMBER

Summer 2009 (hard copy)

Please send all contributions to the AASW NSW Branch Office, P.O. Box 838 Glebe NSW 2037, or email newsletter@aswnsw.com.au

### AASW (NSW) BRANCH NEWSLETTER

Editor: Annie Crowe

Sub-editor: Nives Crvenkovic

Design: Breakout Design

Photography:

Annie Crowe

The views, opinions and advice expressed in this newsletter are those of the authors and contributors, and not necessarily those of, or endorsed by the NSW Branch CoM (Committee of Management). AASW NSW Branch, 123A Mitchell St, Glebe, NSW 2037.

## New South Wales Branch

### 2008 NEWSLETTER ADVERTISING RATES & SPECIFICATIONS

Members Market Place:	90mm (W) x 55mm (H) Landscape	\$22.00 (incl. GST)
Quarter Page:	85mm (W) x 125mm (H) Portrait	\$77.00 (incl. GST)
Half Page:	175mm (W) x 125mm (H) Landscape	\$121.00 (incl. GST)
Full Page:	175mm (W) x 260mm (H) Portrait	\$220.00 (incl. GST)
One Page Insert:	(For inserts, please provide approx. 1600 copies)	\$374.00 (incl. GST)

Clients are also asked to supply file format as one of the following:

TIFF, JPEG (bitmapped) should be in greyscale colour, size 100% at 300 dpi (best printing resolution quality)

EPS format. All text should be in greyscale colour, size 100% at 300 dpi (best printing resolution quality)

PDF format 100% at 300 dpi (best printing resolution quality) and in greyscale colour

Please note: word format is also acceptable. If you have any further queries or wish to place an advertisement in the newsletter, please contact the AASW NSW Branch Office, 02 9518 4944 or email newsletter@aswnsw.com.au

# With the President



*'I predict that the Private Practitioners Practice Group will go from strength to strength and become an important reference group in the future of social work practice.'*

## **HELLO EVERYONE,**

Well here we are in full election mode and I hope you all managed to log on and vote. I am happy to say that all Committee of Management positions have been filled with Siraj Sarguroh retaining his position as our vice president. The branch committee is strong and functional with a very proactive approach to advocating for the membership and I am very pleased to be coordinating this team. The future holds promise of good things to come.

On the national front the website continues to develop with more information coming onto it every day. With the introduction of the new formatted website members can access information and renew memberships easily on line and this is only the beginning. Nives and Suraya have received the training on how to upload NSW Branch information so from now on you will be able to look up very current news and events.. We are keen to use this site as a strong communication tool.

The NSW budget has been determined for 2009-10 and at this stage it looks like business as usual with no funding for any new initiatives. The good news is that there will be a budgetary review in 6 months time and we will re-present some of our proposals and try to get support for them then.

The response to the previous Edition of SWIFT focusing on private practice issues has been very positive and the next industry night will follow up on some of the issues which were covered there. I predict that the Private Practitioners Practice Group will go from strength to strength and become an important reference group in the future of social work practice.

As President I would like to congratulate our two new life members, Elspeth Browne and Jill Davidson. I am personally aware of the contribution both these women have made to social work over the years and know that both have truly earned their place as life members. We will take the opportunity at the AGM on 22nd October to acknowledge their work and celebrate with them.

I can feel the warm breath of spring especially when I stand behind the wheel of my wooden boat, The Dorothy, and glide down the Hawkesbury with my trusty hound, Elsa, beside me.

There is so much to enjoy and I hope you are all getting out there sniffing the roses.

**Annie Crowe**



# Elspeth Browne

**AASW NEWLY ELECTED LIFE MEMBER**

**Elspeth Browne has been a member of the AASW since 1957.**

**The breadth and depth of her contribution to the AASW  
and the social work profession has been truly outstanding.**

The attached curriculum vitae attest to her contributions as a teacher and scholar.

## **Qualifications:**

- Bachelor of Arts (Sydney, 1955)
- Diploma of Social Studies (Sydney, 1956)
- Certificate in Medical Social Work  
(NSW Institute of Hospital Almoners, Sydney, 1957)
- Master of Social Work (by research)  
(New South Wales, 1977)

## **Career Details:**

- 1956-63: Medical social worker in a number of hospital settings in Sydney and London, including social worker in charge, Women's Hospital (Crown Street)
  - 1964-65: Senior Tutor, Faculty of Medicine, University of Queensland.
  - 1966-67: Tutor, Department of Social Studies, University of Sydney, responsible for developing field experience in aged care agencies.
  - 1966-70: Visiting lecturer, NSW Department of Child Welfare
  - 1967-70: Visiting lecturer, Sydney Kindergarten Training College, Waverly.
  - 1968: Field education unit instructor, Royal North Shore Hospital in conjunction with the Department of Social Studies, University of Sydney.
  - 1968-69: Research director, New South Wales Council of Social Service.
  - 1968-71: Locum social worker, Royal North Shore Hospital.
  - 1972-74: Tutor, School of Social Work, University of New South Wales
  - 1974-77: Senior Tutor, School of Social Work, University of New South Wales.
  - 1975-76: As the recipient of an Australian Department of Education higher award in social work, studied for Master of Social Work research degree, undertaking research in fertility control in Australia, subsequently published by the University of New South Wales press as *The Empty Cradle*).
  - 1977-83: Lecturer, School of Social Work, University of New South Wales.
  - 1983-89: Senior Lecturer, School of Social Work, University of NSW.
  - 1990-98: Social worker, Department of Aged and Extended Care, St George Hospital (member of Quality Assurance Committee, Division of Extended Care, 1991-4), subsequently in Gynaecology.
  - 1989-92: Visiting Fellow, School of Social Work, University of NSW.
  - 1983-95: Visiting lecturer, New South Wales Institute of Psychiatry.
  - 1991-99: Visiting lecturer, Department of Community Medicine, University of New South Wales in the area of multiculturalism and the welfare of aging immigrants.
  - 1999-2006: Social work consultant at Montefiore Jewish Homes, supervising social workers.
  - 1999 - : Expert witness for Unisearch and for the Healthcare Complaints Commission of NSW
- Elspeth is a prolific author. She has extensively published in the fields of fertility, aged care and the history of hospital social work. She has taken on key roles within the AASW at National, Qld Branch and NSW Branch levels.

The profession of social work owes much to the contribution of Elspeth Browne.



# Jill Davidson

## AASW NEWLY ELECTED LIFE MEMBER

**Jill Davidson has made a major contribution to both the social work profession and the Australian Association of Social Workers (AASW).**

### Qualifications:

- 1974 Bachelor of Social Work, UNSW
- 1993 Certificate in Supervision for Field Workers, UNSW
- 1996 Graduate Diploma in Equity and Social Administration, UNSW
- 1997 Master of Social Work, UNSW (by course work and thesis)

Jill was elected to the NSW Branch Committee of Management in 1993 and became Branch Vice President in 1994. She was then elected Branch President in 1996 for 3 terms.

In 1996, she was elected as Director on National Board. Since then, Jill has been a strong and effective advocate for social work in NSW.

She was appointed Honorary Associate in the School of Social Work, UNSW July 2003 to August 2005 and then appointed as an Adjunct Senior Lecturer in the School of Social Work, Faculty of Arts and Social Sciences, UNSW 1 January 2006 to 31 December 2008.

She established the Social Justice Award for presentation to key social workers in the community who have played a significant role in furthering social justice issues.

Jill pioneered our links to East Timor, as the Executive Director and founding member of Psychosocial Recovery

and Development in East Timor (PRADET)-1999-2002

In her role as President of the AASW NSW Branch, and in response to the expressed concerns of the membership, Jill co-led a consortium of organisations working with East Timorese Health and Welfare professionals to establish a national Mental Health Service in East Timor. This consortium consists of organisations with expertise in Mental Health and Trauma counselling.

Since 1994, she has had significant social work leadership roles in NSW Health.

From 1994 to 2007, Jill was Director of Social Work Service, including Sexual Assault Services and Domestic Violence Services at St George Hospital NSW.

She was seconded for six months to the central office NSW Department of Health as Acting Manager, Violence Prevention Unit.

She is currently, Head of Social Work Services, The Central Hospital Network, South Eastern Sydney Illawarra Area Health Service.

She is also a vital and active member of the Directors of Social Work in NSW Principle Referral Hospitals. (A special interest group of the NSW Branch of the AASW)

The NSW Branch is grateful to Jill Davidson for her contribution as a true pioneer of the Australian Association of Social Workers.

## AASW NSW BRANCH PRACTICE GROUPS (FORMELY SIG)

### SPECIAL INTEREST GROUPS

#### AGED CARE

Christine Sanderson  
[cfsanderson@optusnet.com](mailto:cfsanderson@optusnet.com)

#### AIDS

**JANET URQUHART**  
[Janet.Urquhart@sesiahs.health.nsw.gov.au](mailto:Janet.Urquhart@sesiahs.health.nsw.gov.au)

#### BRAIN INJURY

Martine Simons  
[martines@chw.edu.au](mailto:martines@chw.edu.au)

#### CARDIAC REHABILITATION

Pamela Cohen  
[pcohen@stvincents.com.au](mailto:pcohen@stvincents.com.au)

#### DIRECTORS OF SOCIAL WORK SERVICES IN PRINCIPAL REFERRAL HOSPITALS

Kate Baker  
[kebaker@nscchs.health.nsw.gov.au](mailto:kebaker@nscchs.health.nsw.gov.au)

#### DISABILITY

Bev White  
[Bev.White@dadhc.nsw.gov.au](mailto:Bev.White@dadhc.nsw.gov.au)

### HOSPITAL SOCIAL WORK MANAGERS

Linley Power  
[linley.power@email.cs.nsw.gov.au](mailto:linley.power@email.cs.nsw.gov.au)

### INFERTILITY

Christine Singleton  
[christine.singleton@sydneyivf.com](mailto:christine.singleton@sydneyivf.com)

### MENTAL HEALTH

Maike Kaehler  
[Maike.Kaehler@sswahs.nsw.gov.au](mailto:Maike.Kaehler@sswahs.nsw.gov.au)

### NORTHERN RIVERS INTEREST GROUP

Rosalie Kennedy  
[Rosalie.Kennedy@ncahs.health.nsw.gov.au](mailto:Rosalie.Kennedy@ncahs.health.nsw.gov.au)

### OBSTETRICS

Sheila Sim  
[SheilaBryce.Sim@sesiahs.health.nsw.gov.au](mailto:SheilaBryce.Sim@sesiahs.health.nsw.gov.au)

### ONCOLOGY SOCIAL WORKERS

Angela Cotroneo  
[angela.cotroneo@email.cs.nsw.gov.au](mailto:angela.cotroneo@email.cs.nsw.gov.au)

### PALLIATIVE CARE SOCIAL WORKERS GROUP

Cay Camden  
[CatherC5@chw.edu.au](mailto:CatherC5@chw.edu.au)

### PRIVATE PRACTICE

Siraj Sarguroh  
[sirajsarguroh@hotmail.com](mailto:sirajsarguroh@hotmail.com)

### PSYCHODYNAMIC INTEREST GROUP

Diane Bell  
[dianembell@bigpond.com](mailto:dianembell@bigpond.com)

### WORKING PARTIES

Registration  
Grahame Colditz  
[grahame.colditz@sesiahs.health.nsw.gov.au](mailto:grahame.colditz@sesiahs.health.nsw.gov.au)

### RETIRED SOCIAL WORKERS GROUP

Mary Doughty  
(Please contact AASW NSW Branch office for details)

# swift

## INDUSTRY NIGHTS

I'm hoping by now that most of you have heard about our NSW Branch Industry Nights and if you haven't...well you will now!

The Social Work Industry Nights began this year and are fast becoming a key event for the NSW Branch calendar. They are held every two months on the third Tuesday of the month at the Marlborough Hotel in Newtown. The Night is free and kicks off at 5.30pm to give social workers the opportunity to come straight after work and meet other social workers in a relaxed social setting.

The idea came from discussions from the NSW Branch Promotions Sub Committee who thought it would be great if social workers were able to get together as professionals, talk about our commonalities and remember why we all chose to be social workers. The opportunity to have interesting conversations and be a part of a wider network also helps reduce isolation, burnout and cynicism, as well as provide social workers with something that is enjoyable, relaxing and adds value to their work.

A guest speaker is invited to talk about a particular topic and it is a great opportunity to meet and talk with members of the NSW Branch Committee of Management. We would really like to hear ideas about what you think we can do to promote the Association and the social work profession in general.

Our last Industry Night was on Tuesday 15 September. Over 60 social workers attended and Priscilla McCorriston spoke about the benefits and challenges of private practice, to a most appreciative audience.

Non-members are also invited to attend and I encourage you and your colleagues to come along, enjoy a drink (and some snacks) and meet other social workers in jobs you never knew existed!

### THE MARLBOROUGH HOTEL

(downstairs in the Cellar),  
145 King St, Newtown  
5.30pm onwards..

Tel 02 9518 4944

or email [info@aswsw.com.au](mailto:info@aswsw.com.au)

### DATE FOR YOUR DIARIES

The Next Industry Night:

Tuesday 24 November, 2009.

RSVP by Thursday 19 November, 2009.





# Pradet Report:

## PEACE AND DEMOCRACY ASSISTANCE FOR JUVENILE JUSTICE

### I. INTRODUCTION

PDAJJ (Peace and Democracy Assistance for Juvenile Justice) is one of three main projects run by PRADET. This project is supported by Kerk In Actie /ICCO in The Netherlands. This project provides service for children and youth who are at risk of committing violent crimes in the community, and some of their violent crimes have resulted in the loss of a family member's life where they have been severely injured.

Since 2006 The PDAJJ program has extended its activities into the area of peace to provide education and peace activities to youth and to the community. Due to the political crisis in 2006 which elicited a lot of violence, many young people have been involved in violence, this has resulted in many of them becoming stressed and suffering from trauma. In viewing these problems the staff who work for this program took an initiative to create an appropriate new program to serve the needs of youth who commit violence in the community with a vision that peace and tranquility can be built if youth are united.

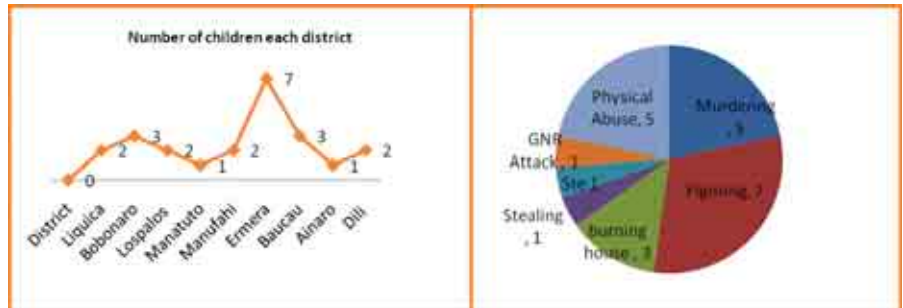
### II. PRISON PROGRAM

#### a) Psychosocial Support for Children and Youth in Prison.

This project carried out by the PDAJJ program has found that children who enter prison often miss out on the support and care planning services they are entitled to. As a result, their long term outcomes are very poor. Therefore prison itself is being considered as a place for rehabilitation to help the recovery of children who have entered prison, and to modify their bad behavior and attitude.

#### b) Individual Support

From January – December 2008 PDAJJ staff met with some of the juveniles individually to identify problems and difficulties that they might have had and thus might need some support or counseling. These difficulties were



identified through a process of group activities; some young people attended these activities voluntarily. For those who needed counseling support, staff offered each person one hour counseling sessions.

PDAJJ staff continued with follow up with the client's families to convey client messages to the family. The purpose of follow up to client families is to obtain more information from their families about the critical history of the client problems. Many of the juveniles in the prison have psychosocial problems which need to be focused on in order to help them find appropriate solutions.

The programme also facilitates their family to visit them in prison. PDAJJ staff have been able to assist many clients to identify their problems and also helped them and their families to find solutions for their problems through counseling.

There has been an improvement in the attitude of the clients towards the counselors as they realise that the counsellors can help them solve their problems. Good relationships between counsellors, clients, prison staff and their families have been fostered.

PDAJJ staff has found it difficult to provide individual support for clients who have intellectual disabilities, mental illness and tuberculosis.

National current court policy is not functioning very well resulting in delays of client cases being processed.

This has had a negative effect on the youth mentality and attitudes and makes them not really serious about participating in this program. As an example, among 17 juveniles which are in the prison, one of them was just released from prison but because he committed another crime, he had to go back to prison.

#### Outcome:

- PDAJJ staff have found some clients who were able to find solutions for themselves, such as gaining acceptance and being happy with the PDAJJ program being implemented with in the prison.



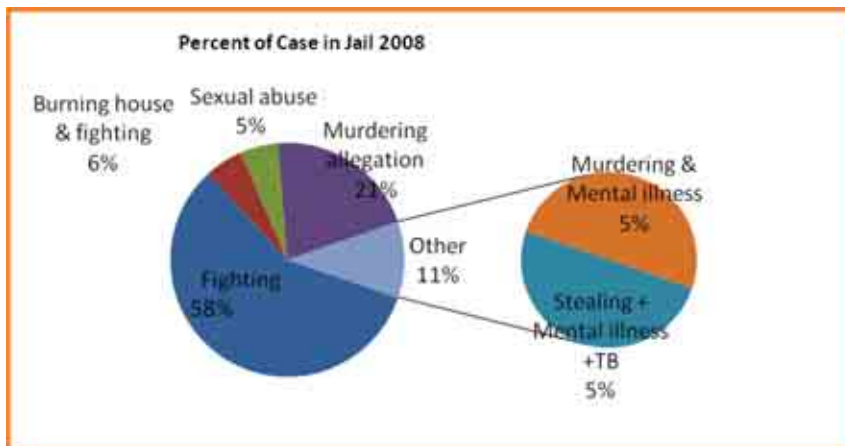
#### c) Family Support

The family support programme is to help and facilitate those families who have a child in prison. This includes visitation, passing on messages, counselling, facilitating transport costs for families that live far from Dili, so that they can visit their children and share information about their children's' conditions in prison.

From January to December 2008, the PDAJJ program has facilitated fifteen families to visit their children from the districts of Lospalos, Dili, Bobonaro,

# Pradet Report:

## PEACE AND DEMOCRACY ASSISTANCE FOR JUVENILE JUSTICE



Viqueque, Suai, Liquica and Ermera. Often the young person is not living constantly in the same place. PDAJJ staff often need to spend much time looking for the particular person in order to meet with them. The geographical conditions and heavy rain in the wet season, as well as very limited human resources where only three staff are working in the program meant that PDAJJ staff could not visit all ex prisoners and families in the districts. In regard to the very limited staff, some families lack information about the regulations around visiting the Prison.

#### Outcome:

- Prisoners were very happy when they met with their parents in the prison.
- Many parents have suggested that PDAJJ staff provide acceptable information to their children in order to educate their mind until they return home or are released.

#### d) Follow up of ex-Prisoners

Follow up activities for ex prisoners are only performed every six months with the intention of monitoring the reintegration process and improving the behaviour of ex-prisoners while in the community. The reason is that while they were in prison they have stopped their study for quite a long time and have perhaps lost the confidence of the community because of the crime they committed. Another reason to undertake follow up activities for ex-prisoners is to monitor

and obtain updated information from their family about normal daily activities such as selling things in the market, becoming drivers for public transport and some of them want to go back to school after being released from prison. Apart from obtaining updated information, staff also went to support and encourage families of ex-prisoners to give moral support to their children in order to prepare them so they can show a positive attitude in the community.

#### Outcome:

- Prisoners' families were happy for the PDAJJ program to revisit them in their home/village
- Some prisoners were employed as drivers on public transport
- Some prisoners got married



### III. PEACE ACTIVITY FOR YOUTH AND CHILDREN

Metinaro is one of the sub-districts of Dili which is about 30 km away. This place is also the location of the current East Timor military base – Forca Defeca Timor Leste (FDTL). Metinaro is also known as a place

where violence often occurs. One of the reasons is because many youths have similar status to that of IDPs who are refugees from Dili city from the time of the political crisis in 2006. Because of this there is a lot of trouble in this community.

PDAJJ staff conducted peace activities for 48 participating children and young people in two villages, Sabuli and Duyung. Through this program staff distributed sports equipment such as volley balls, foot balls, nets and even guitars in order to entertain them through the peace games according to their preferred skills. With this activity, PDAJJ staff expected that youth in this area would be more socially aware and thus stop fighting each other. Due to the different levels of education in this group there emerged very different degrees of understanding about the information which been provided by staff for the group. The information provided is about the impact of violence, managing of emotions, impact of alcohol and conflict resolution. The same activity also conducted in Cristo Rei, a sub district of Dili, for 78 participants - youth 42 and children 36. The activity went on for four weeks. Staff distributed the same sport materials as a way of getting to know those youth and children so that they can create a safe environment in their neighborhood. The reason staff chose this area to conduct the peace activity is because many of the youths in this area were involved in stopping cars and extorting money and also throwing stones at passing cars. Therefore with this activity, staff expected that those who joined in this program would further disseminate peace information to those youth who did not join in this activity.

#### a) International Children Day Celebration

For International Children's Day, organized by the Ministry of Justice (Human Rights Unit) national and international agencies have been invited to join the celebrations on 1

# Pradet Report:

## PEACE AND DEMOCRACY ASSISTANCE FOR JUVENILE JUSTICE

June 2008. PDAJJ staff joined with the government as the committee organiser to organise sport activities to develop children's talents as part of attracting children to participate in this event. This event is representative of children from primary school, street children, IDPs and orphans.

The celebration topic for this event is: "protecting children against violence" as a way to remind society especially leaders of state or government to validate children's rights in East Timor.



### b) Capacity Building for youth and Ex Prisoners

PDAJJ staff have facilitated six ex-prisoners to attend vocational training for one year, starting from 15 October, 2007. They were recently graduated by the Secretary of State for Labor and Solidarity on 15 November, 2008 in the Don Bosco Training Centre, Comoro, Dili. After graduation PDAJJ staff also began to register 10 new candidates of ex-prisoners for the year 2009. Among these ten candidates nine of them have chosen to stay at the college and one has chosen to stay with family. There are two types of vocational training this group can choose to learn, one focuses on automotive and the other focuses on electricity. Eight chose to learn about automotive and two chose electricity.

### c) Capacity building for staff

In 2008 PDAJJ staff have attended capacity building programs in the areas of conflict resolution, alcohol training, capacity training, counselling courses and English courses. With all this training it is hoped that staff will improve their skills step by step in order to deliver better psychosocial services for people who need it.

## A CASE OF CLIENT

<b>NAME:</b>	MR G
<b>AGE:</b>	19 YEARS OLD
<b>ORIGIN:</b>	MOTOLORI-LOSPALOS DISTRICT
<b>LEVEL OF EDUCATION:</b>	PRE SECONDARY SCHOOL
<b>DATE ENTERED PRISON:</b>	11/02/2008
<b>TYPE OF OFFENCE:</b>	STONE CUBAN'S HOUSE.

### HISTORY OF CLIENT

Client had a fever for three weeks and he went to the clinic to get treatment where he was given an injection of paracetamol.

### HISTORY OF FAMILY

Client's father has three wives (polygamy). The first wife is dead leaving two children. The second wife has seven children including Mr G. The client's father married a third wife and separated from the second wife. The second wife was very stressed because she had to look for a job.

When PDAJJ staff performed follow up for client in Lospalos district, Mr G's brother, reported that the client has had a mental illness since he was at primary school at 12 years old. The first symptoms appeared when the client got a high fever. A doctor who worked in the district at that time diagnosed cerebral malaria and the client was hospitalised for a week.

A month after the client recovered, other symptoms appeared like: talking a lot, singing aloud by him self, walking with no direction, screaming, throwing stones and thieving. Police arrested him three times because of his attitude and the client's family tried to find a solution by referring him to a psychiatrist for treatment. The family also tried to give some traditional medicine to the client. The client's condition returned to normal for a little while after this.

Client relapsed again with his illness and became very aggressive, throwing stones at a Cuban doctor's house and thieving. Police arrested him and he entered prison in February 2008.

Pradet provided counselling for the client in prison and to his family in the district. According to our family history assessment, staff decided to include this family in the family support list. Support was offered with transport costs in order to visit the client prison. The client's family also told staff that they are trying to find a public defender in order to progress the case.

# Interdisciplinary Networking Opportunity for Mental Health Social Workers

**B**eing involved in an interdisciplinary network presents social workers with an opportunity to reinforce their value and contribution to the primary mental health team, and build their private practice.

The Mental Health Professionals Network (MHPN) is running workshops for mental health practitioners working within the same local area with the aim of building ongoing local interdisciplinary networks. This is a great opportunity for mental health social workers either working in, or interested in, private practice to meet with GPs, psychiatrists and other health professionals in an informal setting to network, share clinical expertise and develop referral pathways.

Approximately 8% of all workshops have been facilitated by social workers, which is also helping to raise the profile of the individual within the local community, and the profession as a whole. The representation of social workers at MHPN workshops has been strong to date, with an average of almost two social workers registering to attend every workshop. Feedback such as that received from Sue Hawkins, a mental health social worker who attended a recent workshop, reinforces the value of networking with mental health professionals from various disciplines.

“Attending the Mental Health Professionals Network was one of the best things I have done in the past 18 months as a Private Practitioner (Perinatal Mental Health). Sharing areas of specialty, putting faces to voices on the phone, seeing that we are all trying to achieve patient/client best case practice and understanding that it is best done by sharing the load, provides a sense of camaraderie and

support which Private Practice inherently reduces. I would recommend any Social Worker contemplating Private Practice to make participation in a locally based Network a personal and professional a must.”

While workshops have been predominantly scheduled around the capital cities and metropolitan areas so far, MHPN is now moving their focus further afield into regional and rural areas of Australia. Some workshops will be structured around a special interest such as indigenous mental health where applicable. To find out more about participating in, or facilitating a workshop, click here, visit [www.mhpn.org.au](http://www.mhpn.org.au) or call 1800 209 031.

## Background

The Mental Health Professionals Network (MHPN) is a federally funded initiative supported by the Australian Association of Social Workers (AASW). It aims to promote the quality of patient outcomes by fostering collaborative care in the primary care sector.

Workshops provide an informal networking opportunity between medical and allied health professionals working in mental health in the primary care sector. These include GPs, psychiatrists, social workers, psychologists, mental health nurses, occupational therapists and paediatricians. The initial workshop involves networking over a meal, followed by a mental health case study discussion with the aim of discussing collaborative care, issues around each clinician's expertise and referral pathways. The group can then decide to meet again as a local interdisciplinary network. Workshops are fully funded and catered at a local venue, and participants working in private practice receive funding of \$150 (plus GST) to attend. The events are also endorsed by the AASW for CPE points.

## THE WORKSHOPS AIM TO:

- Strengthen and establish relationships with other mental health practitioners.
- Improve awareness between colleagues of the clinical expertise within the local area.
- Enhance and increase use of referral pathways and opportunities for collaborative care.
- Provide ongoing support and opportunities for continuing professional development.

To find out more about upcoming MHPN workshops in your local area, visit [www.mhpn.org.au](http://www.mhpn.org.au) or call 1800 209 031.

# From the Professional Education Committee

**F**rom our point of view the professional education calendar is coming to a close as we have only one workshop left to run. Sadly we have had to cancel a number this year due to insufficient numbers.

The picture is a confusing one as some of the workshops have had good numbers, others which have previously been successful, have not reached the required complement. Cancelling means we disappoint those who have registered and made arrangements and of course, it is difficult for our presenters who are ready and willing.

Late registrations are also a problem because we need to know a couple of weeks before the date, whether or not to run the workshop.

The Professional Education Committee, the Committee of Management and our office staff have been giving lots of thought to getting information out as early as possible and to as many people as we

can, both members and non-members. If there are thoughts about how to reach social workers who are not AASW members we would love to hear them.

Meanwhile plans are under way for the 2010 program. Workshops under consideration are:

- **Solution Focused Brief Therapy**
- **Ethics in Aged Care (booked for April)**
- **Attachment – Early Parent Infant Work**
- **CBT**

A more definite program should be available in our next newsletter. In the meantime any ideas for workshop topics from 'out there' are always welcome.

*Sue Brown*

For the Professional Education Committee

## FIGHTING FAIR

### FIGHTING FAIR (LEVEL 1) MEDIATION & CONFLICT RESOLUTION TRAINING OCTOBER 22 & 23

This interactive and stimulating 2 day course will assist professionals to explore conflict and impart the essential principles and process of mediation. The structured 5-step mediation model and specific conflict resolution skills will be presented and practiced. The course can be utilised in many different areas of conflict e.g. client work, workplace disputes and interpersonal conflict.

### FIGHTING FAIR (LEVEL 2) ADVANCED MEDIATION TRAINING OCTOBER 26 & 27

This challenging and interactive course is aimed at those who already have an understanding and practical experience of the mediation process. The course will focus on advanced issues and aims to refine and update workers skills, practices and theoretical perspectives used to mediate in various areas of conflict.

#### CPE POINTS:

Both trainings are endorsed by the AASW and each course attracts 24 CPE points.

Cost: \$290 + GST per course.

Venue: 699 George St, Sydney (near Central Station).

For further details: Scott Dutton

0425 83 77 56 // [www.fightingfair.com.au](http://www.fightingfair.com.au) //

[fightingfair@bigpond.com](mailto:fightingfair@bigpond.com)

# NSW Private Practice Group and Work Cover

## AN EXCITING NEW PROPOSAL TO INCLUDE SOCIAL WORKERS IN THE ADVOCACY AND TREATMENT OF CLIENTS WITH MOTOR VEHICLE INJURIES UNDER WORKERS COMPENSATION IS UNDER DISCUSSION.

The NSW Private Practitioners Group (NSW PPG) has initiated negotiation with Work Cover to involve social workers in the provision of Work Cover registration provider numbers. The Work Cover framework will allow social workers to provide counselling for victims of motor vehicle accidents.

However, this process is not an easy one. Work Cover requires social workers to be assessed by CAPA for accreditation towards acquiring a work cover provider number. The NSW PPG is against CAPA carrying out this assessment process. We believe that the Australian Association of Social Workers (AASW) is the only professional body that should be making eligibility assessments for Work Cover provider numbers.

The NSW PPG members are of the view that the AASW is the best representative of social workers, ethics and professional standards in Mental Health Practice. In other words, the AASW should be our guide whilst practising in a clinical mental health setting.

As a result, the issue has been raised by the founder of the NSW PPG,

Satyan Rajamani together with Work Cover and with the Honourable Minister, Joe Tripodi. Satyan has made an appointment to meet with Mr Tripodi to discuss the AASW involvement in the process of approving the eligibility criteria for social workers for the provision of Work Cover numbers.

The current arrangement for mental health social workers to obtain a medicare provider number has been working very well. The NSW PPG has requested that the project team at Work Cover review their decision regarding the assessment criteria as soon as possible.

The NSW PPG has reacted as quickly as possible to push for social workers to be on board. However, this does not allow much time. With this in mind, we urge that the parties involved act promptly on this matter so that social workers do not miss out on the opportunity to provide professional assistance to the patients injured in motor vehicle accidents.

NSW PPG are seeking to redress the AASW Mental Health and Ethical Practice Standards which have already been endorsed by Medicare Australia. The NSW PPG strongly believes AASW approved mental health social workers are specialised clinicians who are also approved by the Department of Health and Ageing regarding their ethical and practice standards.

Therefore, our professional standards and compliance should not be assessed by CAPA.

The authority to override schools of social work should not be extended to external assessment bodies such as CAPA, to assess the social work profession for service provision when the standards are already accepted by major government departments.

## Connecting with the Mental Health Professional Network

I am delighted to announce ongoing discussions with the National Mental Health Professional Network Coordinator, Jane Pinnuck. I am currently waiting on a response from the State MHPN for an upcoming project that will provide an opportunity for social workers in private practice to network with other allied health professionals.

The National AASW Chair Person, Steven Brand is coordinating and linking networks within Primary Health Care settings. Other social work professional network initiatives are coming up to promote, develop and advance social work as a profession.

Steven's vision is to demonstrate that social workers are one of the strongest and most resourceful players within the Allied Health professions. As a joint National/State venture, the AASW is keen to work with government and non – government sectors to promote the interests of social work and explore how social workers can be the strongest link to health and other corporate and educational institutions.

This is a great news for the Private Practitioners Group in NSW. We are looking forward to working with this initiative with renewed energy.

It's an opportunity to work collaboratively at National and State levels to deliver the best outcomes for the development of the social work profession.

### **Ms. Mohini Prasad**

Clinical Social Worker  
Chair person /Promotions NSW Private Practitioner Group

## SOCIAL WORKERS IN PRIVATE PRACTICE – NSW GOOGLE GROUP

Please provide your feedback through this website at Google. Join as a member or send your email to: [swippnsw@googlegroup.com](mailto:swippnsw@googlegroup.com)

To open the page for membership or to visit this website: <http://groups.google.com/group/swippnsw>

## UPCOMING WORKSHOP:

### *How to start Private Practice*

#### VENUE

Rydges Hotel at Camperdown

#### DATE

Saturday 7th November 9am – 5pm

#### COST

\$150.00 or \$120-00 (early bird bookings)

#### PLEASE CONTACT

Satyan Rajamani 0433 581 031

Siraj Sarguroh 0424 129 904

Mohini Prasad 0403 224 516

# University News

## SYDNEY UNIVERSITY FIELD EDUCATION NEWS:

### Free Seminar for Field Educators: 22nd October 2009

"Preparing to be a Field Educator" is a workshop presented for social work practitioners with an interest in social work student learning and field education. This workshop will build on your experiences as a learner and a practitioner and prepare you for the important task of becoming a field educator. His seminar is also open to those wanting a refresher in their role as field a educator.

These workshops are now being held three times a year due to popular demand. The next workshop will be on the 22nd October 2009 from 9.30am to 4pm on the 22nd October 2009 at The University of Sydney Camperdown Campus.

For more information and to register, please contact Andrea Small on: [a.small@edfac.usyd.edu.au](mailto:a.small@edfac.usyd.edu.au) or ring 9351 6897.

### Field Education Mini Conference: 25th November 2009

#### "Effective Field Education"

Each year the School of Social Work and Policy Studies at The University of Sydney holds a Field Education Mini-Conference. This is a time for field educators to meet together and discuss issues of particular interest. This year the conference will be held on Wednesday 25th November on the Camperdown Campus at University of Sydney. It will be an all-day event, with a focus on "Effective Field Education". We have a great line-up of presenters and stimulating topics to be covered in the discussion forum at the end of the day.

For more information, please contact Andrea Small on (02)9351-6897 or [a.small@edfac.usyd.edu.au](mailto:a.small@edfac.usyd.edu.au).

## PROFESSIONAL LEARNING OPPORTUNITIES IN 2009

### Social Inclusion: Policy and Practice

**DAY(S)/TIMES(S):** Monday 14  
September, 9.00am – 4.00pm

#### ACADEMIC COORDINATOR:

Dr Sue Goodwin

**CONTENT:** This course will provide students with grounding in theories

concerning social inclusion. Students will then be encouraged to critically examine policy and practice implications of a social inclusion framework.

#### ENQUIRIES:

Nina Goodwin, Project Coordinator:

Tel: 02 9351 6329, email:

[nina.goodwin@edfac.usyd.edu.au](mailto:nina.goodwin@edfac.usyd.edu.au)

### Introduction to Narrative Therapy

**DAY(S)/TIMES(S):** Thursday 24 &  
Friday 25 September, 9.30am – 4.00pm

#### ACADEMIC COORDINATOR:

Dr Rosalie Pockett

**CONTENT:** This two-day workshop will begin with an introduction to the philosophy of narrative work, then move on to practice exercises, small group work and reading. The experiential workshop design will focus on participants developing beginning skills in narrative practice. There is potential for workshop members to continue informally as a narrative therapy practice group.

**ENQUIRIES:** Nina Goodwin, Project Coordinator: Tel: 02 9351 6329, email:

[nina.goodwin@edfac.usyd.edu.au](mailto:nina.goodwin@edfac.usyd.edu.au)

### Two Days with Michael Ungar: Nurturing the Hidden Resilience of At-Risk Children and Families across Cultures and Contexts

**DAY(S)/TIMES(S):** Thursday 8 & Friday  
9 October, 8.30am – 4.00pm

**CONTENT:** This two-day workshop challenges professionals working with children, youth and families labelled 'dangerous', 'deviant', 'delinquent' and 'disordered' to better understand problem behaviours. Based on research with high-risk young people around the world, a culturally sensitive model of intervention will be presented that nurtures young people's 'hidden resilience'.

While we commonly think of resilience as an individual's capacity to 'beat the odds' and overcome great adversity, this workshop focuses on how mental health professionals and human service providers can 'change the odds' to make resilience more likely to occur. An integrative strengths-based model of practice will be discussed and its application in child welfare, mental health, education and correctional settings explored. Using interactive exercises, clinical transcripts and video

recordings of work with children and families, Michael will show how this model of practice helps professionals discover the pathways to resilience young people use to survive and thrive. This culturally sensitive approach avoids the "resistance" commonly found when those intervening label and stigmatise those they are trying to help.

This workshop both explores this model of treatment and gives participants an opportunity to discuss the most challenging children, youth and families with whom they work.

**ENQUIRIES:** Rachel Payne, Project

**COORDINATOR:** Tel: 02 9351 8520,

email: [r.payne@edfac.usyd.edu.au](mailto:r.payne@edfac.usyd.edu.au)

### Professional Practice Supervision

**DAY(S)/TIMES(S):** Fridays 16 & 23  
October, 9.30am – 4.00pm

#### ACADEMIC COORDINATOR:

Associate Professor Jude Irwin

**CONTENT:** This course will examine and critique different approaches to professional supervision in the health, human and community services. It will identify key features of a working environment that can enhance or inhibit supervision. It will assist in identifying and developing knowledge and skills in the application of both staff and student supervision.

**ENQUIRIES:** Nina Goodwin, Project Coordinator: Tel: 02 9351 6329, email:

[nina.goodwin@edfac.usyd.edu.au](mailto:nina.goodwin@edfac.usyd.edu.au)

### Child Neglect: Effective Interagency Response

**DAY(S)/TIMES(S):** Thursday 29  
October, 9.30am – 4.30pm

#### ACADEMIC COORDINATOR:

Ms Denise Lynch and Dr Fran Waugh

**CONTENT:** This workshop will assist professionals from different arenas who work with children to identify and understand child neglect and their interagency responsibilities. It will help these professionals in addressing the multiple levels of child neglect and developing appropriate interagency strategies that may assist the child. Child neglect is a very difficult phenomenon for workers to identify and understand. It is often underpinned by poverty, and it is often unclear about who has the responsibility for change. Child neglect is one of the major causes of death, or

near death for very young children, and a major inhibitor to positive growth and educational development for all children.

**ENQUIRIES:** Nina Goodwin, Project Coordinator: Tel: 02 9351 6329, email: nina.goodwin@edfac.usyd.edu.au

### **Leadership in Social Work: The Transition from Practitioner to Manager**

**DAY(S)/TIMES(S):** Thursdays 5 & 12 November, 9.30am – 4.00pm  
Academic Coordinator: Dr Rosalie Pockett

**CONTENT:** Using didactic and experiential learning techniques, this course will cover introduction to leadership and management – understanding the difference, management contexts of contemporary human service organizations, occupational and organisational cultures, teamwork, supervision, managing organisational change and critical reflection and learning about personal leadership styles.

**ENQUIRIES:** Rachel Payne, Project Coordinator: Tel: 02 9351 8520, email: r.payne@edfac.usyd.edu.au

### **Motivational Interviewing for Enhancing Intrinsic Motivation – an Introduction**

**DAY(S)/TIMES(S):** Tuesday 10 November, 2.00pm – 5.00pm

**ACADEMIC COORDINATOR:** Dr Kate Russell

**CONTENT:** Motivational Interviewing is a client-centred, directive method for enhancing intrinsic motivation to change by exploring and resolving ambivalence. It is a model to describe how people change certain health related behaviours (such as stopping smoking or starting physical activity) and examines an individual's own fears and difficulties in order to resolve the issue. Participants will develop an understanding of motivational interviewing and key strategies.

**ENQUIRIES:** Nina Goodwin, Project Coordinator: Tel: 02 9351 6329, email: nina.goodwin@edfac.usyd.edu.au

### **Motivational Interviewing for Enhancing Intrinsic Motivation – Introductory Workshops**

**DAY(S)/TIMES(S):** Tuesday 11 & 12 November, 8.00am – 4.00pm

### **ACADEMIC COORDINATOR:**

Dr Kate Russell

**CONTENT:** Motivational Interviewing is a client-centred, directive method for enhancing intrinsic motivation to change by exploring and resolving ambivalence. It is a model to describe how people change certain health related behaviours (such as stopping smoking or starting physical activity) and examines an individual's own fears and difficulties in order to resolve the issue.

This workshop program will explore motivational interviewing in greater detail providing practical techniques to resolve ambivalence. Attendance on Day 1 (14 April or 10 November) is a pre-requisite to participation in days 2 and 3. Day 2 will develop further understandings and begin an exploration of the use of the technique. Day 3 will focus on enhancing skills and strategies.

**ENQUIRIES:** Nina Goodwin, Project Coordinator: Tel: 02 9351 6329, email: nina.goodwin@edfac.usyd.edu.au



THE UNIVERSITY OF  
NEW SOUTH WALES

## **Master of Couple and Family Therapy (MCFT)**

The MCFT has been offered by UNSW Social Work since 1994 in partnership with the Australian Institute of Relationship Studies (the training division of Relationships Australia NSW). It is an interdisciplinary clinical training program designed for social workers, psychologists and other counselling professionals.

The program is offered every two years only.

Applications for the 2010-2011 program close 30 October 2009.



Brochure and Special Application Form can be downloaded via <http://siss.arts.unsw.edu.au> or email Dr Carmel Flaskas, MCFT Program Coordinator at [mcft.unsw.edu.au](mailto:mcft.unsw.edu.au) (T 02 93851960)

# A TRIBUTE TO BRIDGET GILLING

1922 – 2009

Well-known Castlecrag identity Bridget “Biddy” Gilling died peacefully in Blue Mountains nursing home on 25 June. She had remained socially and politically active, and in paid employment, well into her 80’s.

Bridget was raised in a social activist family in England with strong Fabian, Humanist and Quaker influences. Her mother, Cicely Corbett Fisher, and her aunt, Margery Corbett Ashby, were prominent suffragists and campaigners for labour reform. Her Irish father Chalmers (Pat) was an Oxford Blue in rugby who trialled for Ireland.

During WWII her family hosted refugees from Nazism as well of hundreds of service personnel from the Empire, particularly Canadians, Australians and New Zealanders. It was through this connection she met her future husband Douglas Gilling, who was serving in the navy. They were engaged after an acquaintance of three days and married in Sussex.

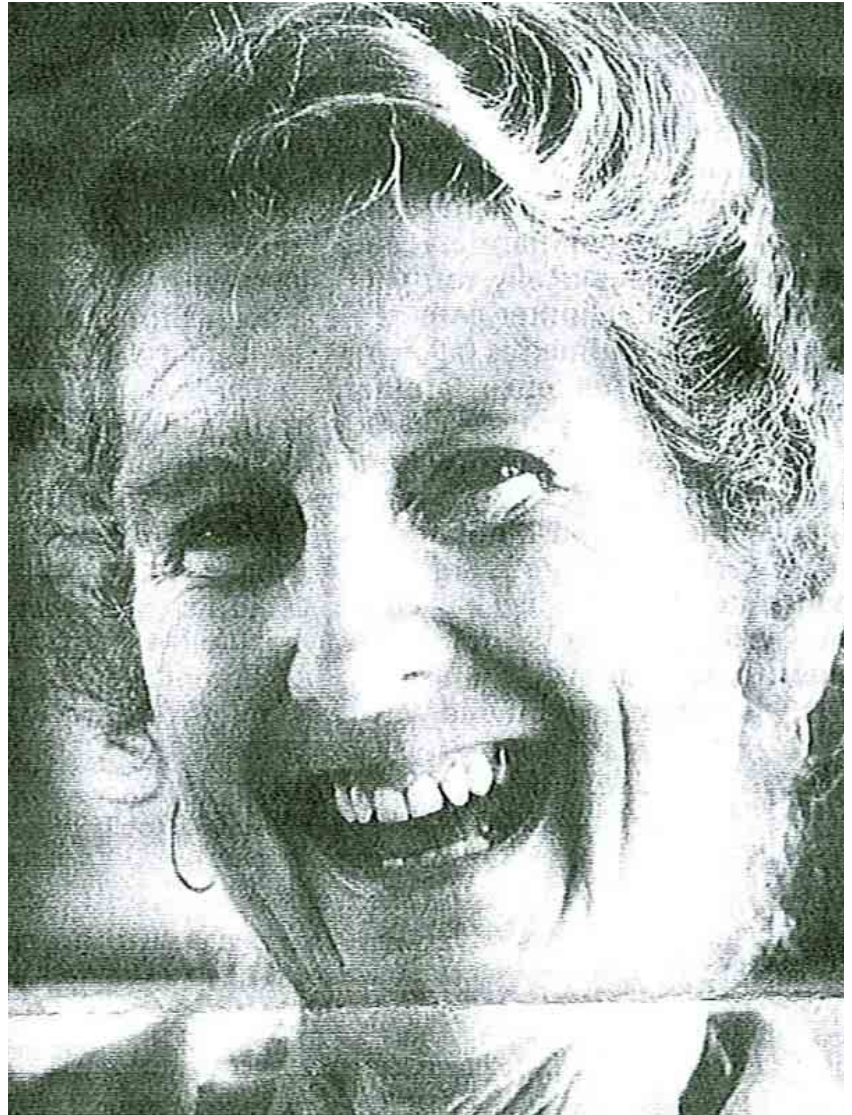
Bridget came to Australia as a war bride in 1946 to join her then repatriated husband. They settled soon afterwards in Castlecrag, where they lived for the next 56 years, and where they continued her family tradition of giving house room to waifs and strays, both two and four-legged.

After raising four children, Bridget graduated in social work from Sydney University in 1971. This led to a range of appointments to Commonwealth and State boards including the Social Security Appeals Tribunal, Mental Health Review Tribunal and NSW prisons ‘official visitor.’ She also chaired the Australians Consumer Association board and was active with the Prison Reform Council, the Australian Council of Social Service, Women’s Electoral Lobby, Council for Civil Liberties, and was president of the Humanist Society and the Voluntary Euthanasia Society. Bridget is however, most closely associated with the abortion reform movement, for which she led the campaign from the late 1960s standing as an abortion law reform candidate for the state seat of Bligh in 1971.

Bridget was an active member in the Castlecrag community and established a close circle of friends here. She was a regular contributor to community events and participated in a range of forums and discussion groups where her humanity and reasoned argument served as a guide and mentor to many others. She was close to her family and provided them with dedicated support in times of need.

Douglas, a prominent architect, and Bridget separated in the 1970s, but remained close for the rest of her life. He survives her, with their children Jeremy, Tracy, Jane and Rebecca, and her seven grandchildren.

— Jeremy Gilling and Bob McKillop



*‘If you have a comfortable background and good health, I think you owe something to the community. You must do something about what you see is wrong.’*

*— Bridget Gilling*

# DIALECTICAL BEHAVIOUR THERAPY

## TWO-DAY WORKSHOP

Presented by Sarah Maguire

DATE:	THURSDAY, 29 OCTOBER 2009 AND FRIDAY 30 OCTOBER, 2009
TIME	9.30 A.M. TO 4.30 P.M.
VENUE:	AASW NSW BRANCH OFFICE 123A MITCHELL ST, GLEBE (CNR DERWENT ST – ENTER FROM DERWENT ST) (FOUR HOUR METERED PARKING OUTSIDE THE VENUE; NON-METERED PARKING A COUPLE OF STREETS AWAY. PARKING ALSO AVAILABLE AT BROADWAY SHOPPING CENTRE CAR PARK, BROADWAY. ENTRANCES LOCATED ON BAY ST AND FRANCIS ST)
COST:	AASW MEMBERS: \$220.00 (INCL. GST) SOCIAL WORKERS WHO ARE NON MEMBERS: \$298.00 (INCL. GST)
CPE POINTS:	THIS COURSE ATTRACTS 24 AASW CPE ACCREDITATION POINTS

This workshop will provide you with a practical introduction to the skills that comprise the Dialectical Behaviour Therapy Program designed by Professor Marsha Linehan. The day will be divided into four modules, much like the program, covering in order:

- Mindfulness Skills
- Emotion Regulation
- Interpersonal Effectiveness
- Distress Tolerance Skills

Each participant will leave the workshop having a broad understanding of how the DBT package is utilised and possessing some practical exercises for each of the core modules that comprise the program and information on the avenues to pursue to become a DBT therapist.

DAY ONE: will cover the theoretical underpinnings of the core modules of the DBT skills training program.

DAY TWO: will involve the use of experiential exercises designed to form part of the DBT program.

**SARAH MAGUIRE** completed her Doctorate in Clinical Psychology and PhD at the University of Sydney. She worked for four years as a coordinating therapist on the Dialectical Behaviour Therapy Program at Wesley Private Hospital, and as a psychologist and researcher for the Peter Beumont Eating Disorder Service. She has also worked for the Department of Psychological Medicine University of Sydney and Royal Prince Alfred Hospital. She is currently employed by the NSW Department of Health as a mental health adviser and works part-time in private practice. She has conducted a number of training workshops in Mindfulness and DBT Skills.

## CLOSING DATE FOR APPLICATIONS: Friday, 15 October 2009.

Enquiries: AASW NSW Branch, tel. 02 9518 4944, fax. 02 9552 3005, email [info@aswnsw.com.au](mailto:info@aswnsw.com.au)

- PLEASE NOTE: 1. Full Payment by closing date is required to secure a place.  
2. Cancellations after the closing date and non-attendance are not eligible for refund

## Registration Form and Tax Invoice Dialectical Behaviour Therapy

AASW ABN 93 008 576 010 • Thursday 29 October, Friday, 30 October 2009.

Cost for cheque/money order/direct deposits: **Members: \$220.00** (incl. GST); **Non-members: \$298.00** (incl. GST)

Cost for credit card payments: **Members: \$227.00** (incl. GST), **Non-members: \$307.00** (incl. GST)

For credit card payments or direct deposit please call the AASW NSW Branch Office

NAME	MEMBER NO.	
WORKPLACE		
ADDRESS		
PHONE	MOBILE	EMAIL

Please send registration form and cheque payable to AASW NSW Branch, PO Box 838, Glebe NSW 2037.

# AASW NSW BRANCH Committee of Management

## **PRESIDENT**

Annie Crowe  
[anniecrowe@hotmail.com](mailto:anniecrowe@hotmail.com)

## **DIRECTOR**

Sue Nesham  
[sue.nesham@dhhs.tas.gov.au](mailto:sue.nesham@dhhs.tas.gov.au)

## **VICE PRESIDENT**

### **PRIVATE PRACTICE**

Siraj Sarguroh  
[sirajsarguroh@hotmail.com](mailto:sirajsarguroh@hotmail.com)

## **TREASURER**

Kamal Jain  
[natgem@hotmail.com](mailto:natgem@hotmail.com)

## **PROMOTIONS**

Amanda Boyd  
[amandaboyd10@bigpond.com](mailto:amandaboyd10@bigpond.com)

Maria Merle  
[mitchymerle@hotmail.com](mailto:mitchymerle@hotmail.com)

## **EDUCATION**

Sue Brown  
[susiebrown9999@hotmail.com](mailto:susiebrown9999@hotmail.com)

Suzanne Noisen  
[suzanne\\_noisen@hotmail.com](mailto:suzanne_noisen@hotmail.com)

## **REGISTRATION PRACTICE GROUPS**

Grahame Colditz  
[grahame.colditz@sesiahs.health.nsw.gov.au](mailto:grahame.colditz@sesiahs.health.nsw.gov.au)

## **PRACTICE GROUPS**

Claudia Graham  
[claudiag@iinet.net.au](mailto:claudiag@iinet.net.au)

## **PROMOTIONS/ ETHICS**

Biljana Milosevic  
[bil\\_m@hotmail.com](mailto:bil_m@hotmail.com)

## **PRIVATE PRACTICE**

Mohini Prasad  
[medilinkcounselling@bigpond.com](mailto:medilinkcounselling@bigpond.com)  
Rajamani Rajan  
[satyan@optusnet.com.au](mailto:satyan@optusnet.com.au)

AASW NSW Office 123A Mitchell St Glebe NSW 2037 • PO Box 838 Glebe NSW 2037 • [info@aswnsw.com.au](mailto:info@aswnsw.com.au) • T 02 9518 4944 • F 02 9552 3005

## **NSW BRANCH SUB-COMMITTEES**

### **Professional Education**

Convenor: Sue Brown  
[susiebrown9999@hotmail.com](mailto:susiebrown9999@hotmail.com)

### **Registration**

Convenor: Grahame Colditz  
[Grahame.Colditz@SESIASHS.HEALTH.NSW.GOV.AU](mailto:Grahame.Colditz@SESIASHS.HEALTH.NSW.GOV.AU)

### **Newsletter**

Editor: Annie Crowe  
[anniecrowe@hotmail.com](mailto:anniecrowe@hotmail.com)

### **Practice Groups**

Convenor: Grahame Colditz and Claudia Graham  
[Grahame.Colditz@SESIASHS.HEALTH.NSW.GOV.AU](mailto:Grahame.Colditz@SESIASHS.HEALTH.NSW.GOV.AU)  
[claudiag@iinet.net.au](mailto:claudiag@iinet.net.au)

### **Promotions**

Convenor: Amanda Boyd  
[amandaboyd10@bigpond.com](mailto:amandaboyd10@bigpond.com)

### **NSW Branch Ethics Group**

Convenor: Bijana Milosevic  
[bil\\_m@hotmail.com](mailto:bil_m@hotmail.com)

*If you have any ideas or concerns you'd like to discuss, or if you're interested in joining one of the branch sub-committees or the NSW Branch Ethics Group, please contact the appropriate convenor.*

## AASW NSW Branch Office details

123a Mitchell Street, Glebe  
(cnr Derwent St – enter from Derwent St)

**Mail:** PO Box 838 Glebe NSW 2037

**Tel:** 02 9518 4944

**Fax:** 02 9552 3005

**Email:** [info@aswnsw.com.au](mailto:info@aswnsw.com.au)

**Public Transport:** Catch a train to either Town Hall or Central station. From there, catch the 431 or 433. Once you reach Glebe Point Rd, alight at the first stop (cnr Glebe Point Rd and Mitchell St).

**Parking:** Four-hour metered parking outside the venue (\$2.20 per hour)

**Resources:** The AASW NSW Branch Office has a variety of social work journals and newsletters from 1958 to the present; conference papers dating from 1947; papers presented to the NSW CoM in the 1960s; NSW Branch Annual Reports; NSW CoM minutes and miscellaneous information from national office.

If you would like to use these resources for research, please call the AASW NSW Branch Office.