



**AASW**

.....  
Australian Association  
of Social Workers

***Social workers and the NDIS:  
A guide for becoming a  
registered provider***

**14<sup>th</sup> November 2016**

© Australian Association of Social Workers  
National Office – Melbourne  
Level 7, 14-20 Blackwood St,  
North Melbourne, VIC 3051  
PO Box 2008,  
Royal Melbourne Hospital, VIC 3050

Enquiries regarding this document can be directed to:

Dr Sebastian Cordoba  
AASW Policy & Advocacy  
Email: [sebastian.cordoba@asw.asn.au](mailto:sebastian.cordoba@asw.asn.au)

## Introduction

The Australian Association of Social Workers (AASW) welcomes the advent of the NDIS (National Disability Insurance Scheme) as a rights-based approach that supports the independence and the social and economic participation of people with a permanent impairment or condition. The values of 'choice and control' that underpin the Scheme are consistent with the values and principles of self-determination and empowerment that have guided the social work profession for many decades.

The aim of this document is to provide a guide for social workers who are looking to become NDIS registered providers.

## What is the National Disability Insurance Scheme?



The NDIS will provide all Australians under the age of 65 who have a permanent and significant disability with the reasonable and necessary supports they need to enjoy an ordinary life. The NDIS began with some trial sites around Australia from July 2013. It will be rolled out gradually around the rest of Australia from 1 July 2016.

The NDIS is being introduced in stages around Australia to ensure it is successful and sustainable. People who are eligible for NDIS support are called participants. Each participant has their own NDIS plan that identifies the outcomes they wish to achieve, the supports that will be funded by the NDIS and other supports the person requires. People with disability will choose the providers they engage and can change providers at any time.

For more information about the scheme visit: <https://www.ndis.gov.au/>

## The role of social work in the NDIS

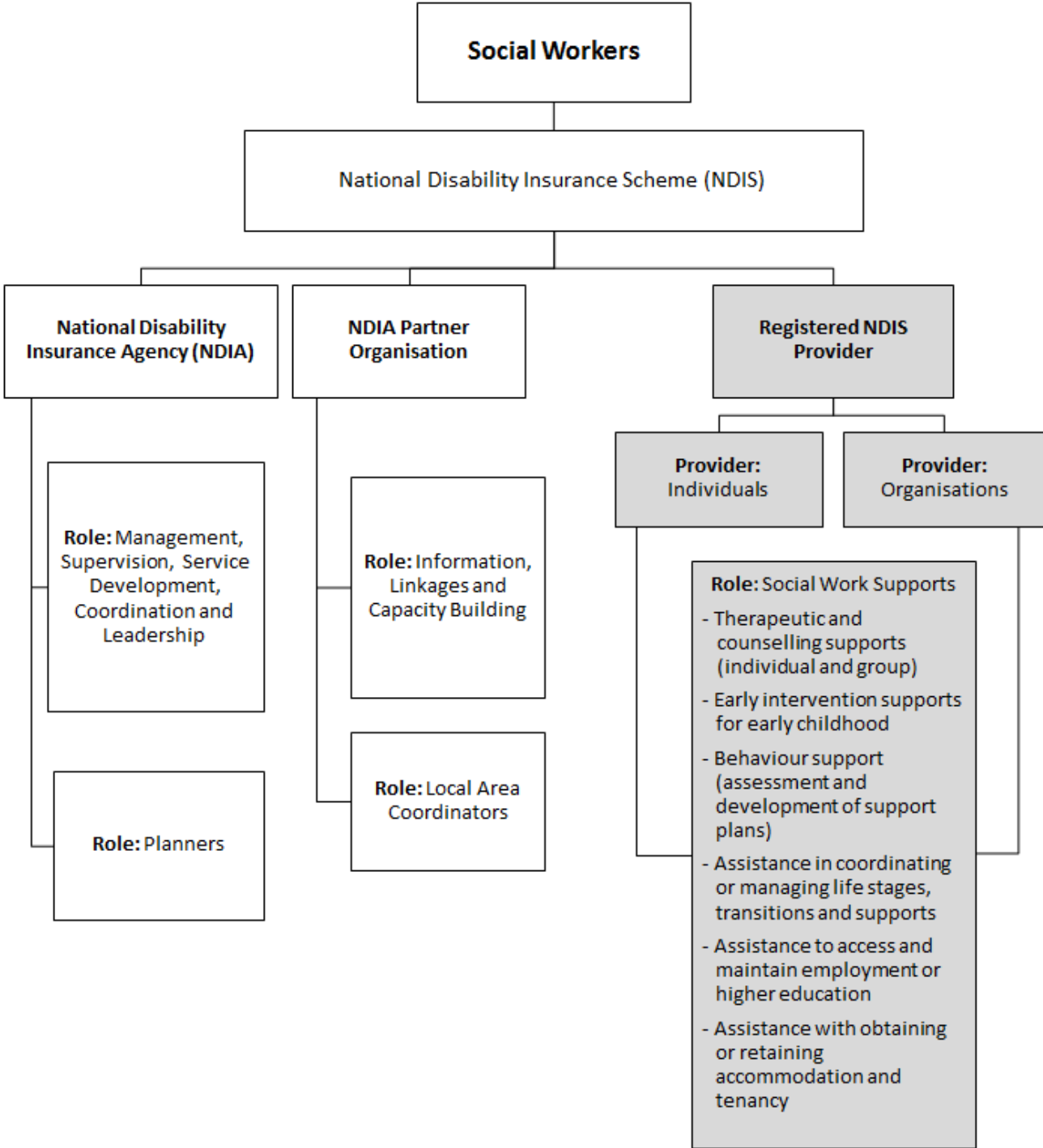
Professional social work skills and supports have historically been integral to disability services in both government and non-government organisations. Social workers have had a strong role in assessment, planning and case management across all types of disability and service provision. This is particularly because of our expertise in addressing both personal and systemic dimensions of support and intervention.

Social Workers focus on maintaining and enhancing quality of life in a range of settings to facilitate empowerment and assist people with disability, their families and communities. Our work includes all levels of management and program design, individual planning, counselling, coordination and case management, as well as policy development, research and advocacy.

The values, qualifications and skills of social workers constitute a precise match with the person-centred approach of the NDIS. Social work practice is across the life span, and this includes working with children, adults, families, carers, groups and communities. Most importantly, social workers work alongside people with disability to facilitate their empowerment (and that of their families) and achieve their needs, goals and aspirations.

Social workers are present throughout the entirety of the NDIS (see Figure 1) in varied roles, including planners, Local Area Coordinators, managers, supervisors and as registered providers.

**Figure 1: Social work roles in the NDIS**



This document focuses primarily on the supports that social workers can provide as registered NDIS providers. Under the NDIS eligibility criteria and price guide social workers can provide several specific supports, including:

- Therapeutic and counselling supports (individual and group)
- Early intervention supports for early childhood
- Behaviour support (assessment and development of support plans)
- Assistance in coordinating or managing life stages, transitions and supports
- Assistance to access and maintain employment or higher education
- Assistance with obtaining or retaining accommodation and tenancy

For further information see: [NDIS Provider Toolkit Module 4: Guide to Suitability](#)

## Becoming an NDIS provider

In order to become a registered provider and offer social work services you must become an AASW member. The NDIS provides a comprehensive document for individuals who wish to register, titled the NDIS Provider Toolkit <https://www.ndis.gov.au/providers/provider-toolkit>. The following information is a summary of the key points from the resource. We recommend members access the Toolkit for further information.

### What is a registered provider?

Registered providers are individuals or organisations that are registered with the NDIA to deliver a support or a product to a participant in the NDIS. The NDIS will be rolled out gradually around Australia from 1 July 2016. People with disability will continue to receive supports from the Commonwealth, State and Territory governments until the NDIS is rolled out in their area.

For more information: <https://www.ndis.gov.au/providers/ndis-providers.html>

### Can I provide supports?

To register with the NDIS, providers need to consider their suitability to provide services in the NDIS marketplace and ability to meet Quality and Safeguards requirements.

Some of the questions to consider include:

- Where do you want to provide supports?
- What are the Quality and Safeguards requirements for those areas?
- What types of services would you provide and to whom?

### Getting ready

To get ready for the registration process potential providers can start reviewing the [Provider Toolkit](#) on the NDIS website including the NDIS Terms of Business and [price guides](#). It is important at this stage to determine any conflict of interest and consider a value proposition for NDIS participants.

Providers also need to:

- Determine how they will market their service to participants
- Engage with participants as clients (customers)
- Understand the participant's goals, preferences and objectives

## Getting registered

To [register as a provider](#) you need to:

- Complete the [Provider Digital Access \(PRODA\)](#) authentication process and obtain a [myplace account](#)
- Submit an intent to register – <https://www.ndis.gov.au/providers>
- Select the registration groups to register for
- Read and sign the [Declaration of Suitability](#)  
and
- Provide supporting evidence and documentation.

## State and territory requirements for Specialist Disability Providers

Each state and territory has slightly different requirements of disability service providers operating in their jurisdiction. In addition to the expected professional requirements and expertise, providers must satisfy and comply with jurisdictional requirements relevant to the state(s) or territor(ies) in which they provide service.

**Section 4.7** [Provider Toolkit Module 4: Guide to Suitability](#) details the specific state or territory requirements or see below for further information

- [ACT -Registering as a provider](#)
- [NSW -Registering as a provider](#)
- [NT - Registering as a provider](#)
- [Qld - Registering as a provider](#)
- [SA - Registering as a provider](#)
- [Tas. - Registering as a provider](#)
- [Vic. - Registering as a provider](#)
- [WA - Registering as a provider](#)

## Registered NDIS provider

Once a provider is registered they can start marketing their services and engaging with NDIS participants to understand their goals, preferences and objectives.

For more information visit the NDIS website: <https://www.ndis.gov.au/>

Contact the AASW: <http://www.aasw.asn.au/contact-us>



**AASW**  
.....  
**Australian Association  
of Social Workers**

T 02 6199 5000  
F 02 6199 5099  
E [ceo@asw.asn.au](mailto:ceo@asw.asn.au)

**National Office**  
Level 7, 14-20 Blackwood St North Melbourne, VIC 3051

**Postal Address**  
PO Box 2008, Royal Melbourne Hospital, VIC 3050

**Incorporated in the ACT**  
**ACN 008 576 010 / ABN 93 008 576 010**